

# Rotary Atomizer

## TYPE F600/800

for atomization of fluid feeds in spray drying  
and spray dryer absorption

- Epicyclic gear drive
- Heavy duty design
- Patented atomizer wheels



# Rotary Atomizer, Type F600/F800

## The atomizer drive

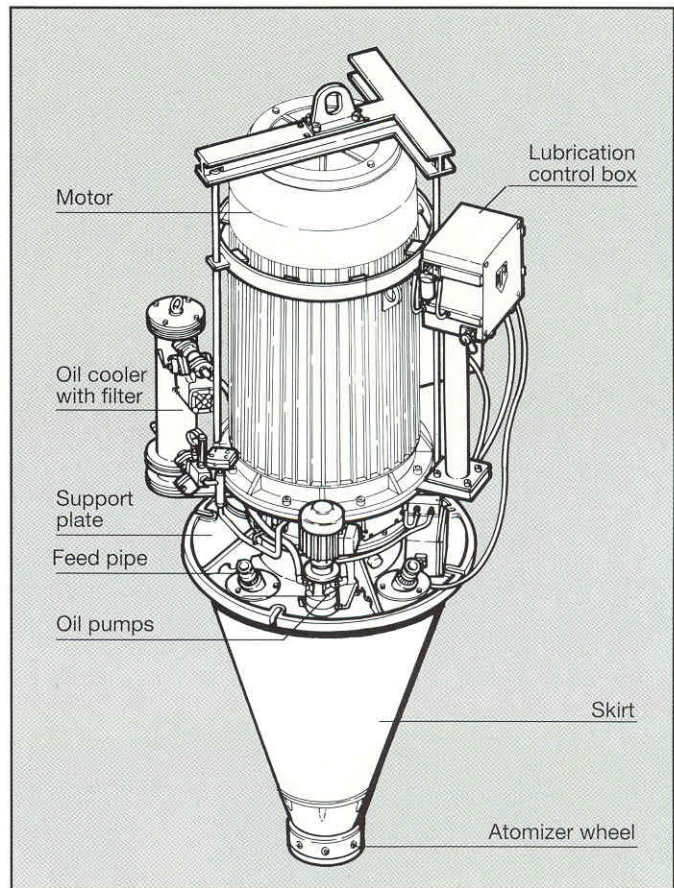
The atomizer drive consists of two parts. The upper part comprises the gear box, motor, and its support. The motor is a 2-pole, vertical flange type, the power being transmitted from the motor to the vertical gear box input shaft via a toothed coupling. The lower part of the atomizer comprises the support for the spindle bearings, feed pipe and cooling air assembly, and conical protective skirt. The spindle runs in special high speed, single row, radial ball bearings. The drive is designed after the flexible spindle concept so that irregularities in feed rate and other minor imbalances in the atomizer wheel can be compensated without spindle and bearing damage. The accompanying monitoring system comprises:

- Low oil pressure alarm.
- High and low oil level alarm.
- High oil temperature alarm.
- Flooding alarm as protection against feed leakage on to the supporting plate.
- Spindle vibration alarm as protection against excessive vibration conditions (optional extra for certain product applications).
- Tachometer to register spindle speed if speed is adjusted by control of a frequency converter. (Optional extra).
- Ammeter and running hour meter placed in the spray dryer control panel to indicate operating performance.

## The atomizer wheel

The F600 and F800 operate with a bushing wheel. Various sizes are available, and selection depends upon the operating specification. 320 mm and 350 mm diameter wheels for F 600 atomizers have 24 bushings, while 320 mm and 350 mm diameter wheels for F800 atomizers have 12.

All wheels are of patented design, where parts exposed to feed are abrasion-resistant and easily replaceable. Wheel material is stainless steel with bushings and bottom plate of advanced ceramic material.



## Specification

Wheel speed range	6,000 - 9,000 rpm 9,000 - 11,500 rpm	(F600) (F800)
Feed rate	max. 200 t/h max. 100 t/h	(F600) (F800)
Feed pipe	2 1/2" BSP (one or two)	
Cooling air pipe	3" BSP	
Weight	1700 kg	
Nominal power consumption	max. 630 kW max. 1000 kW	(F600) (F800)
Gear box type	epicyclic	

**GEA** Niro A/S

Process Technology  
Division

Niro A/S · Gladsaxevej 305 · PO Box 45 · DK-2860 Soeborg · Denmark · Tel.: +45 39 54 54 54 · Fax: +45 39 54 58 00 · Reg. No. 12682